



LAGUNE BAY
SINT MAARTEN

LAGUNE BAY RESIDENCES

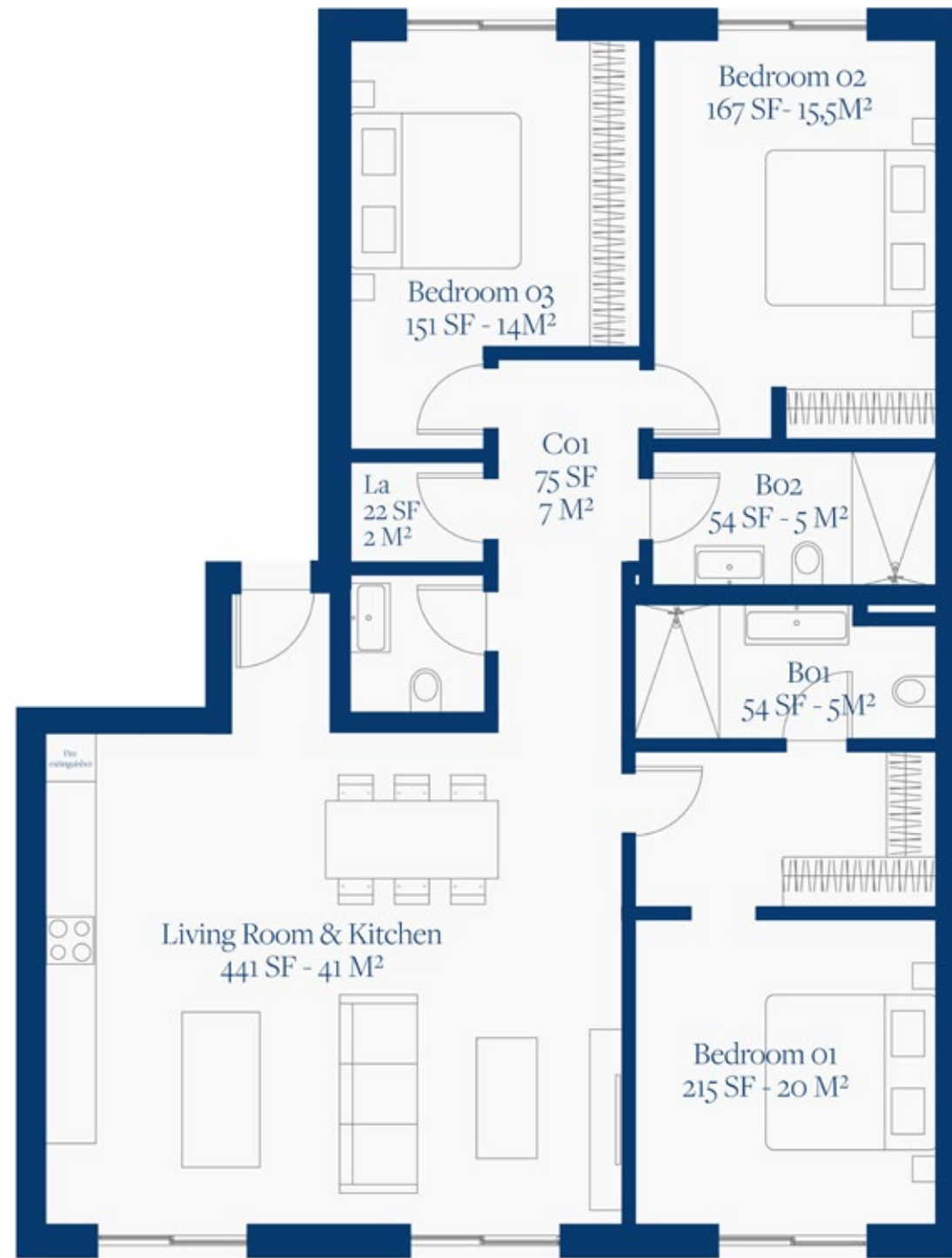
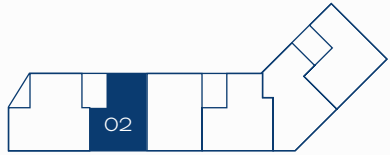
SECOND FLOOR PLAN
UNIT 02

Lagune Bay
Residences

OCEAN
EAST

SECOND
FLOOR

UNIT 02





LAGUNE BAY[®]
SINT MAARTEN



www.lagunebay.com

SITE LOCATION
& SALES CENTER

Octavius L. Richardson Road
Little Bay, Sint Maarten

+1 (940) 612-9862
info@dolomitadevelopment.com

 ORAL REPRESENTATIONS CANNOT BE RELIED UPON AS CORRECTLY STATING THE REPRESENTATIONS OF THE DEVELOPER. FOR CORRECT REPRESENTATIONS, MAKE REFERENCE TO THIS BROCHURE AND TO THE DOCUMENTS REQUIRED BY SECTION 718.503, FLORIDA STATUTES, TO BE FURNISHED BY A DEVELOPER TO A BUYER OR LESSEE.

These materials are not intended to be an offer to sell, or solicitation to buy a unit in the condominium. Such an offering shall only be made pursuant to the prospectus (offering circular) for the condominium and no statements should be relied upon unless made in the prospectus or in the applicable purchase agreement. In no event shall any solicitation, offer or sale of a unit in the condominium be made in, or to residents of, any state or country in which such activity would be unlawful. The purchase of real estate is a significant decision. Developer makes no representations concerning any potential for future profit, any future appreciation in value, any income potential, tax advantages, depreciation or investment potential regarding acquiring a unit, nor any monetary or financial advantages related to the same. No statements or representations are made regarding the economic or tax benefits to be derived, if any, by the buyer from acquiring and/or owning a unit. Dolomita Development & Logistic Solutions NV a Company organized under the law of Sint Maarten DWI. Purchasers shall look solely to the developer (and not to Dolomita Development and/or any of its affiliates other than developer) with respect to any and all matters relating to the marketing and/or development of the condominium and with respect to the sales of units in the condominium. All images and designs depicted herein are artist's conceptual renderings, which are based upon preliminary development plans, and are subject to change without notice in the manner provided in the offering documents. All such materials are not to scale and are shown solely for illustrative purposes.